

# 中文輸入法

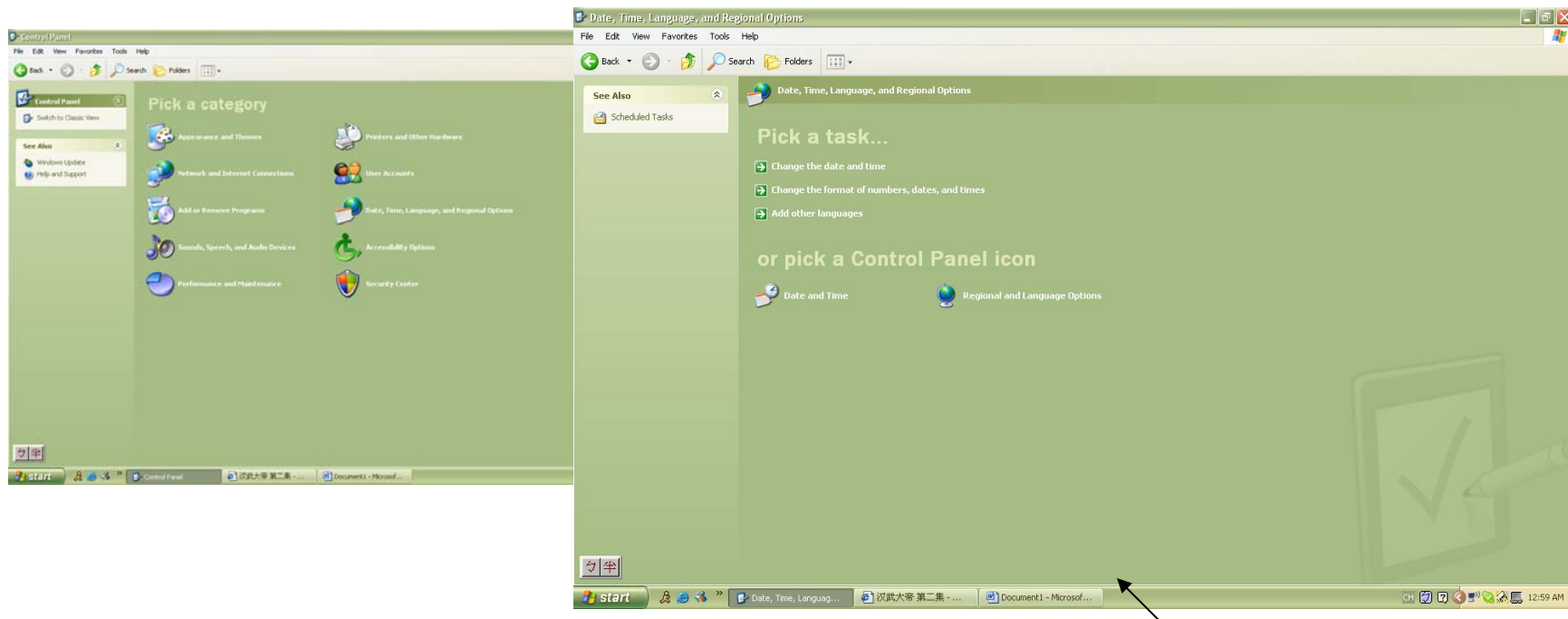
## Chinese Character Input Method

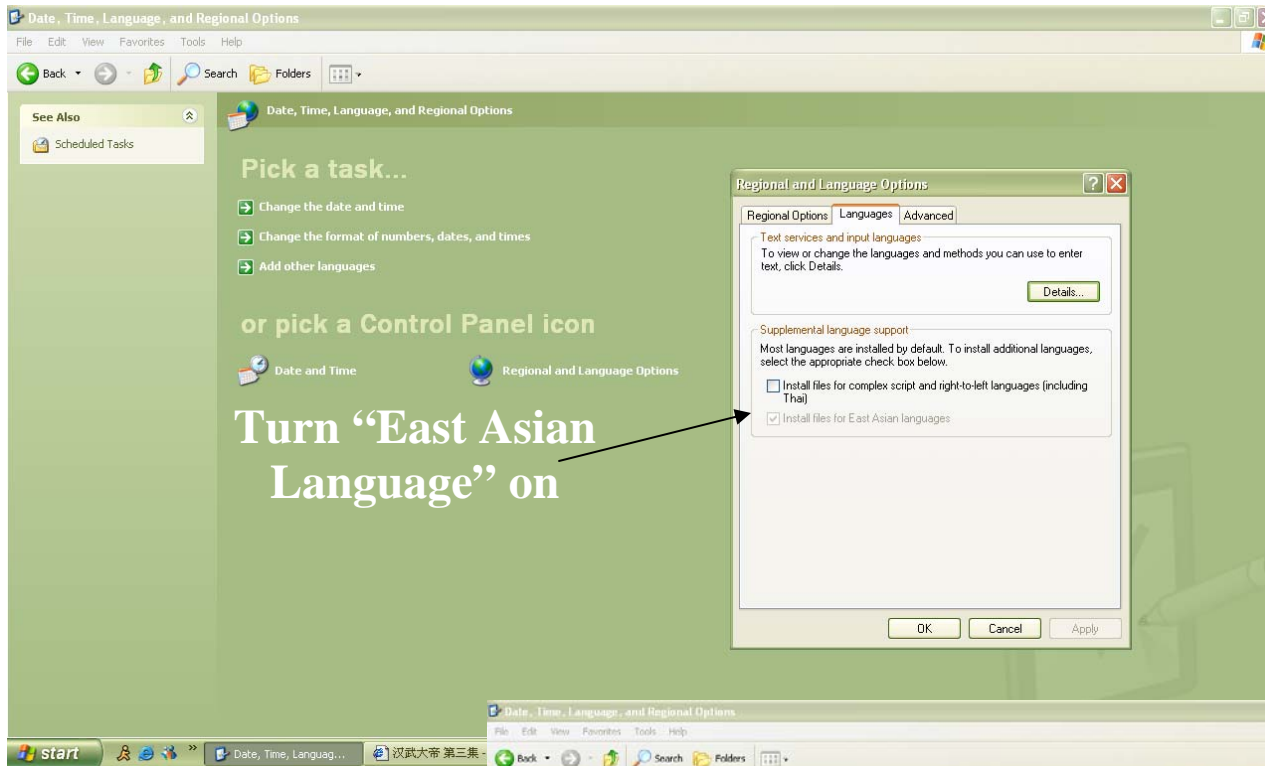
中文輸入法有很多種，如雙橋、南極星、無蝦米、自然輸入..等此些軟體都必須另行購買，但微軟的輸入法是每部電腦都有的。每部電腦只要是“2000”以上都沒有問題。

Chinese input method has very many kinds, like Twinbridge, 南(nán) 極(jí) 星(xīng), 無(wú) 蝦(xiā) 米(mǐ), IQ Chinese. And so on this software all must separate purchase, but Microsoft's input method is each computer all has. Each computer as long as is "2,000" above all does not have the question.

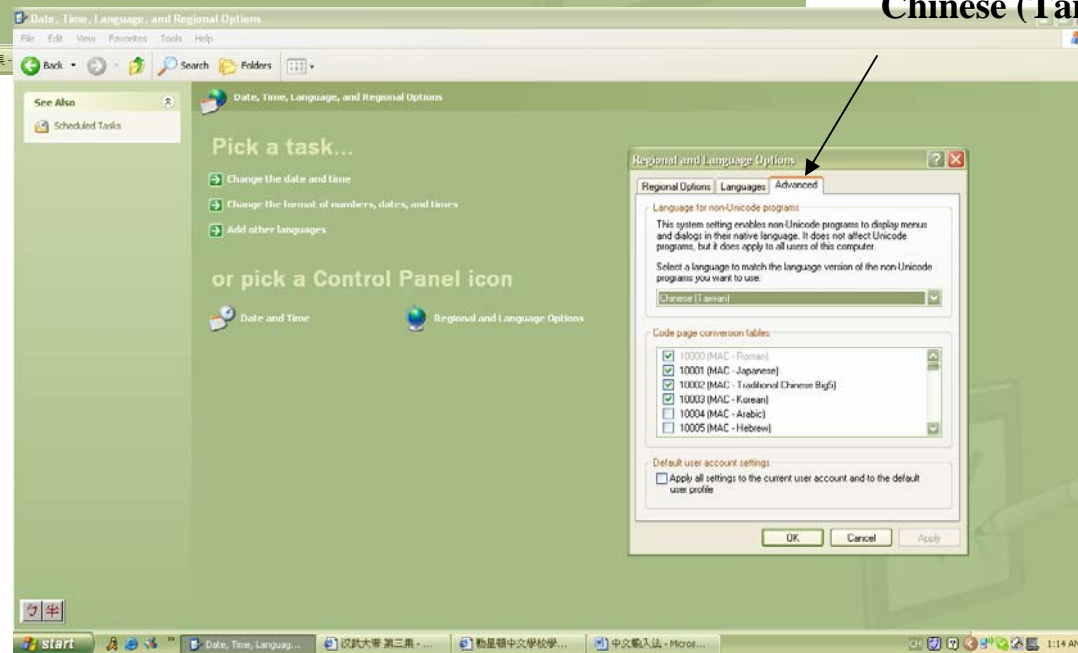
### 1) Setting

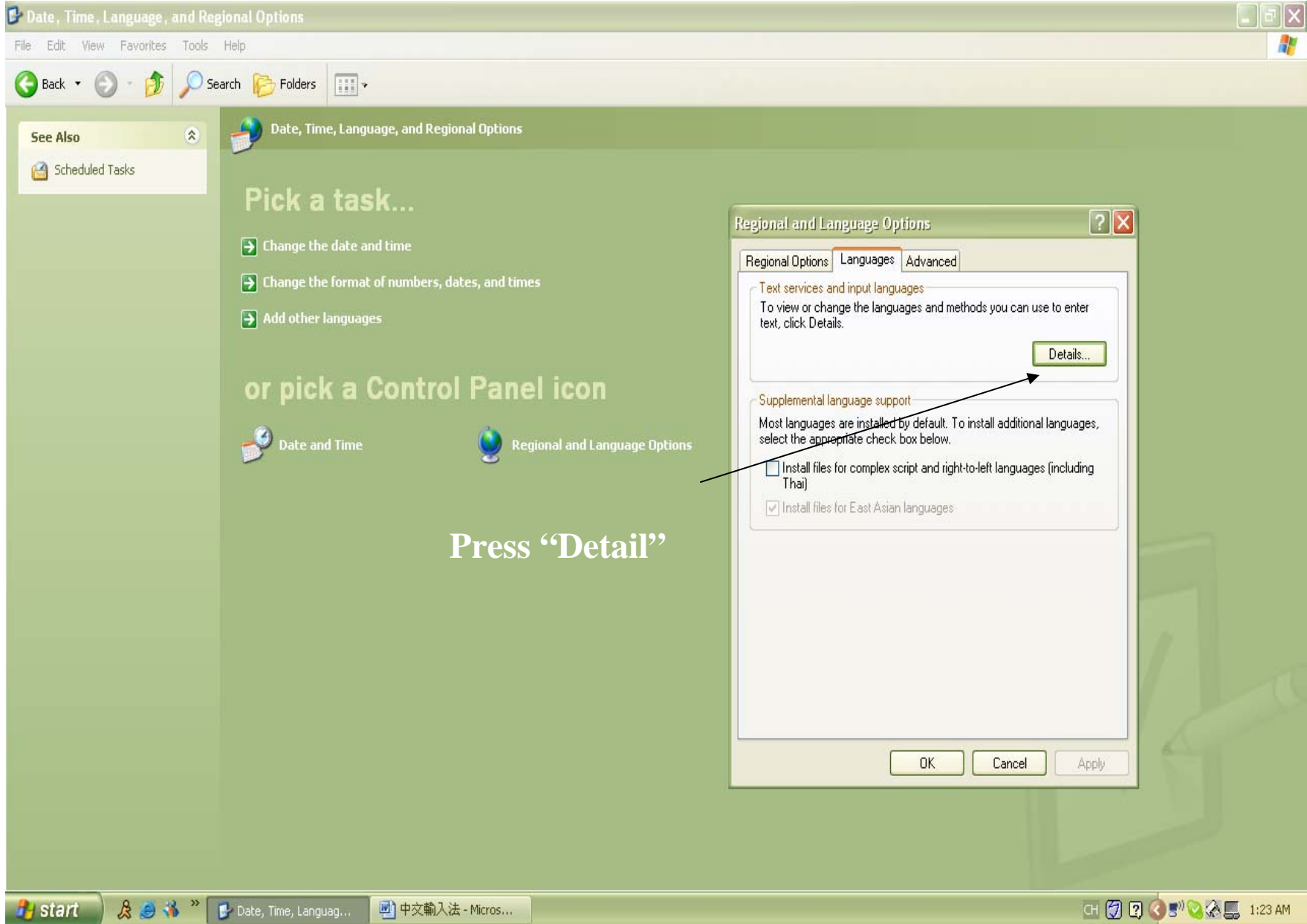
Control Panel → Language, Regional Option





At Advanced page  
Choose  
Chinese (Taiwan)





## Pick a task...

- Change the date and time
- Change the format of numbers, dates, and times
- Add other languages

## or pick a Control Panel icon



Press "Detail"

Regional and Language Options

Regional Options Languages Advanced

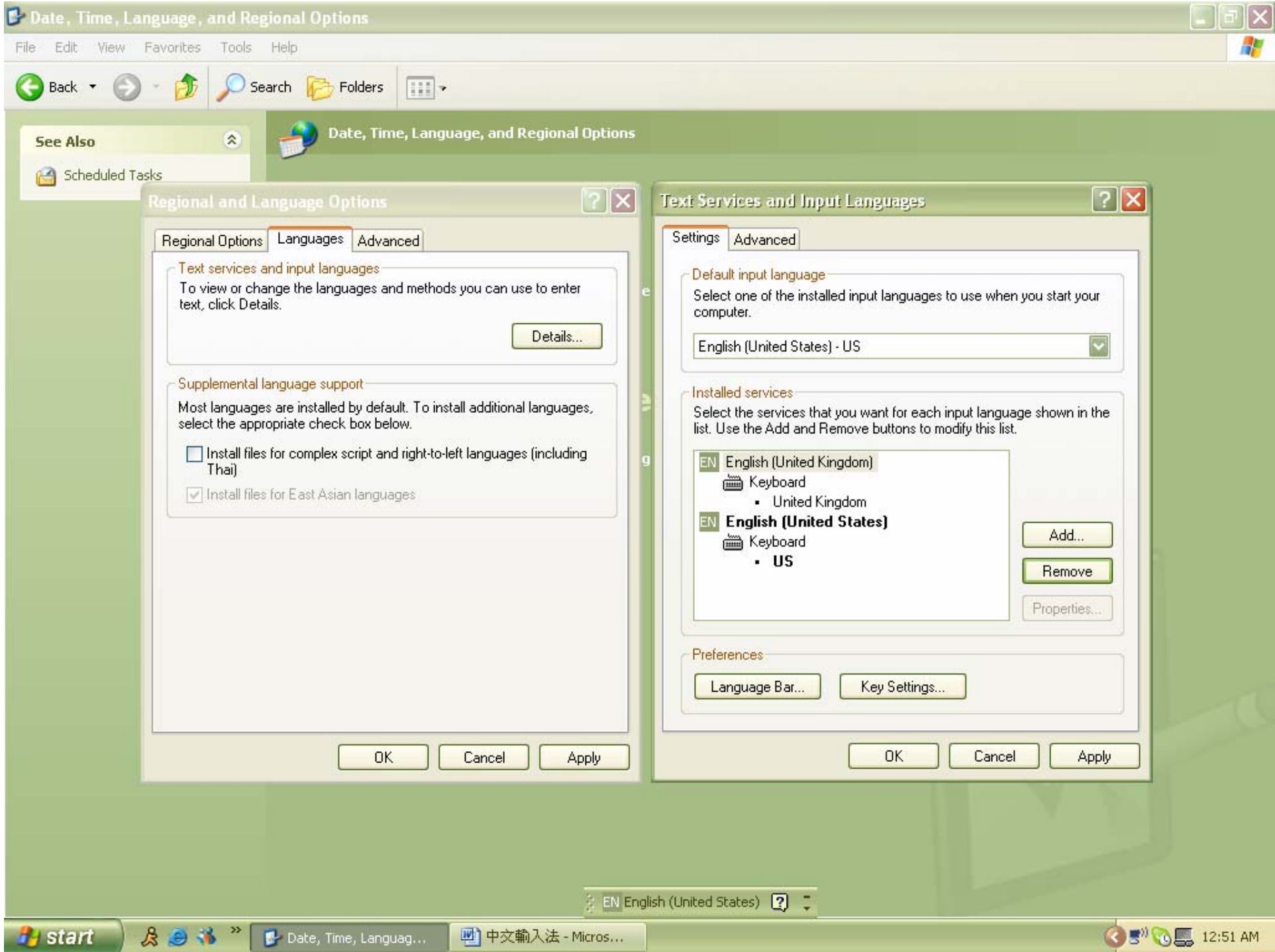
Text services and input languages  
To view or change the languages and methods you can use to enter text, click Details.

Details...

Supplemental language support  
Most languages are installed by default. To install additional languages, select the appropriate check box below.

- Install files for complex script and right-to-left languages (including Thai)
- Install files for East Asian languages

OK Cancel Apply



See Also

Scheduled Tasks

Date, Time, Language, and Regional Options

Regional and Language Options

Regional Options Languages Advanced

Text services and input languages

To view or change the languages and methods you can use to enter text, click Details.

Details...

Supplemental language support

Most languages are installed by default. To install additional languages, select the appropriate check box below.

- Install files for complex script and right-to-left languages (including Thai)
Install files for East Asian languages

OK Cancel Apply

Text Services and Input Languages

Settings Advanced

Default input language

Select one of the installed input languages to use when you start your computer.

English (United States) - US

Installed services

Select the services that you want for each input language shown in the list. Use the Add and Remove buttons to modify this list.

- English (United Kingdom) Keyboard - United Kingdom
English (United States) Keyboard - US

Add...

Remove

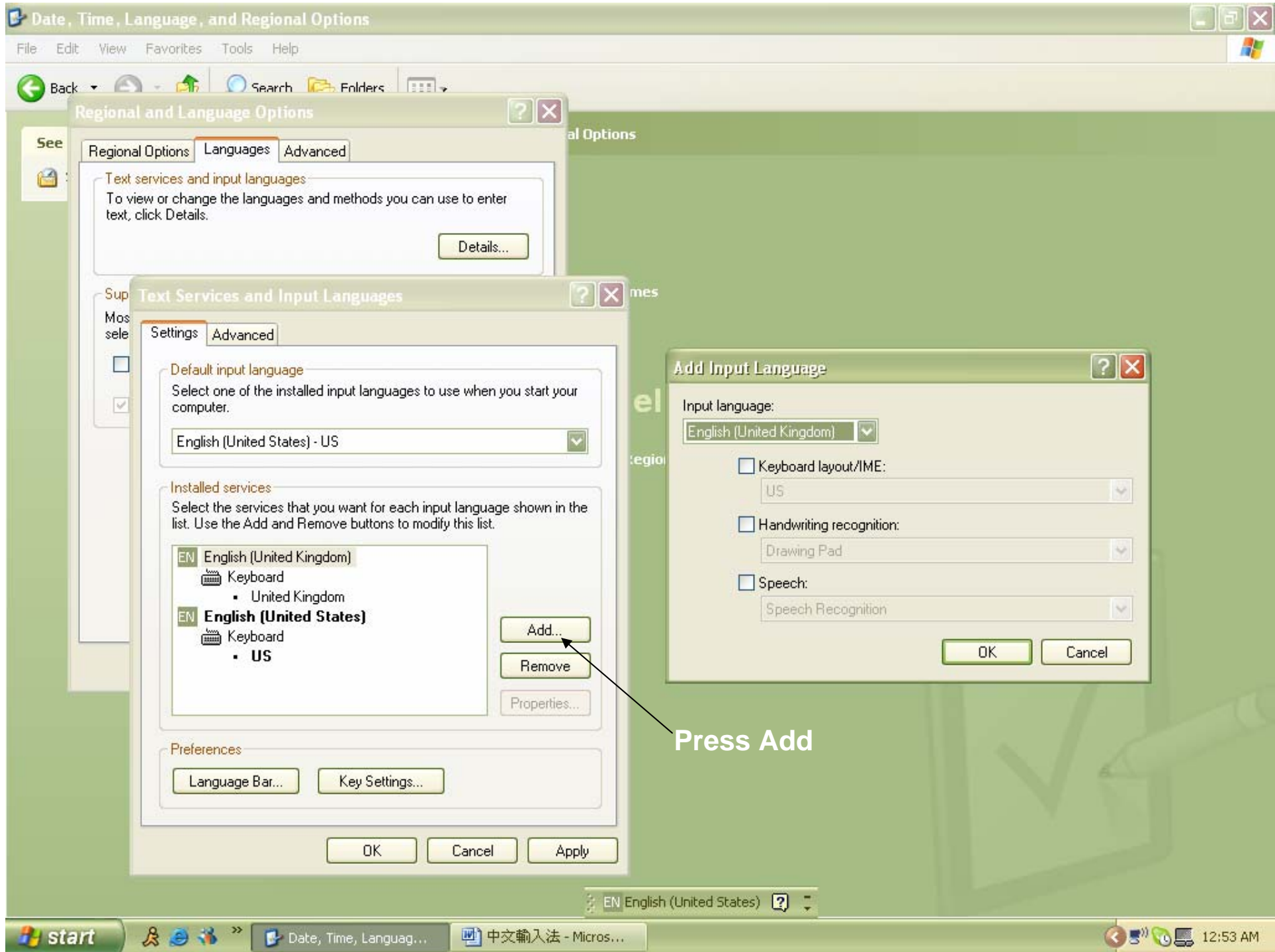
Properties...

Preferences

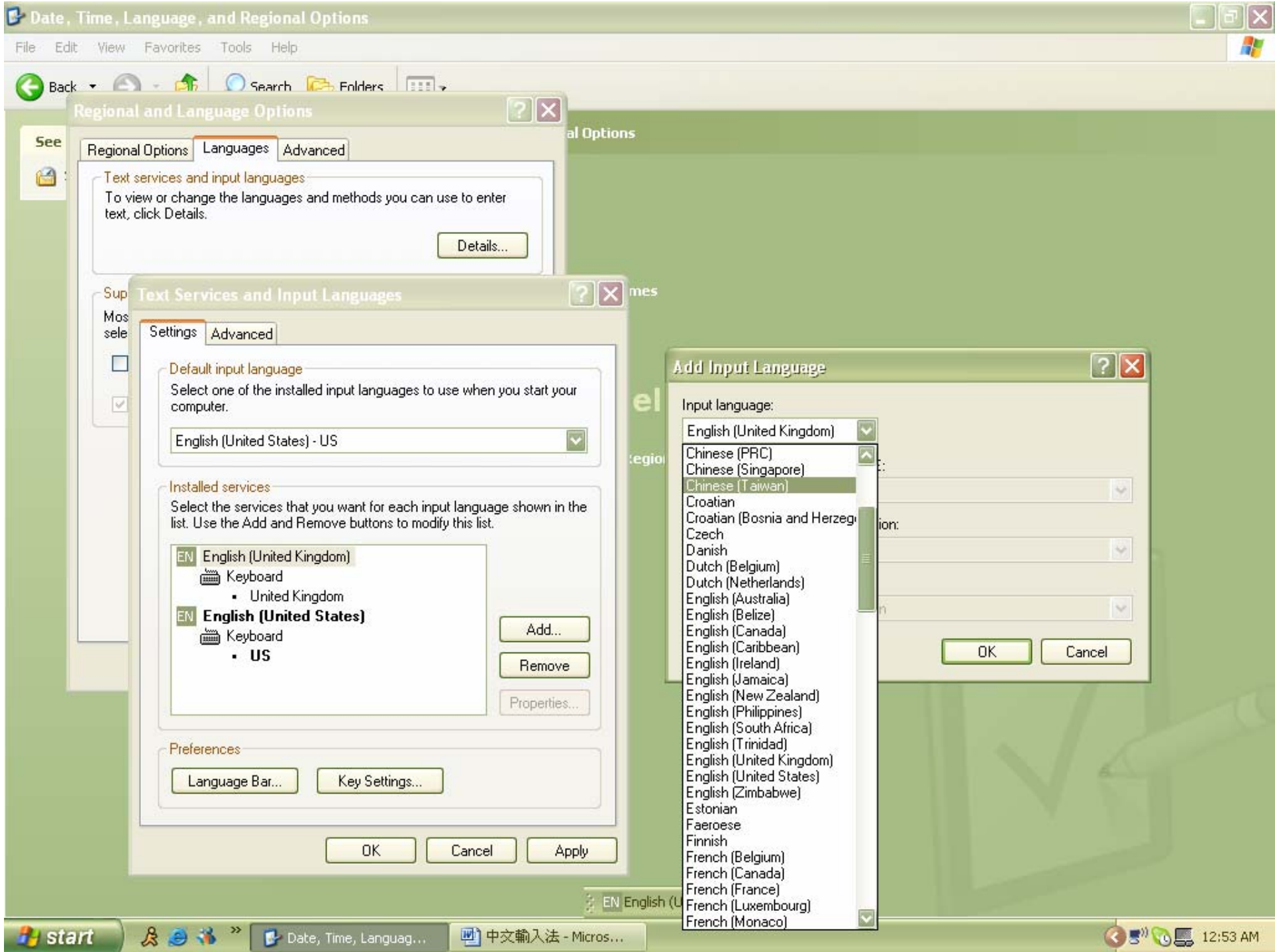
Language Bar...

Key Settings...

OK Cancel Apply



Press Add



Date, Time, Language, and Regional Options

File Edit View Favorites Tools Help

Back Search Folders

Regional and Language Options

Regional Options Languages Advanced

Text services and input languages

To view or change the languages and methods you can use to enter text, click Details.

Details...

Text Services and Input Languages

Settings Advanced

Default input language

Select one of the installed input languages to use when you start your computer.

English (United States) - US

Installed services

Select the services that you want for each input language shown in the list. Use the Add and Remove buttons to modify this list.

- EN English (United Kingdom)
  - Keyboard
    - United Kingdom
- EN English (United States)
  - Keyboard
    - US

Add...

Remove

Properties...

Preferences

Language Bar...

Key Settings...

OK

Cancel

Apply

Add Input Language

Input language:

- English (United Kingdom)
- Chinese (PRC)
- Chinese (Singapore)
- Chinese (Taiwan)
- Croatian
- Croatian (Bosnia and Herzegovina)
- Czech
- Danish
- Dutch (Belgium)
- Dutch (Netherlands)
- English (Australia)
- English (Belize)
- English (Canada)
- English (Caribbean)
- English (Ireland)
- English (Jamaica)
- English (New Zealand)
- English (Philippines)
- English (South Africa)
- English (Trinidad)
- English (United Kingdom)
- English (United States)
- English (Zimbabwe)
- Estonian
- Faeroese
- Finnish
- French (Belgium)
- French (Canada)
- French (France)
- French (Luxembourg)
- French (Monaco)

OK

Cancel

start

Date, Time, Language...

中文輸入法 - Micros...

12:53 AM

# Date, Time, Language, and Regional Options

File Edit View Favorites Tools Help

Back Search Folders

## Regional and Language Options

Regional Options Languages Advanced

### Text services and input languages

To view or change the languages and methods you can use to enter text, click Details.

Details...

## Text Services and Input Languages

Settings Advanced

### Default input language

Select one of the installed input languages to use when you start your computer.

English (United States) - US

### Installed services

Select the services that you want for each input language shown in the list. Use the Add and Remove buttons to modify this list.

- EN English (United Kingdom)
  - Keyboard
    - United Kingdom
- EN English (United States)
  - Keyboard
    - US

Add...

Remove

Properties...

### Preferences

Language Bar...

Key Settings...

OK

Cancel

Apply

## Add Input Language

Input language

Chinese (Traditional)

Czech (QWERTY)

Czech Programmers

Chinese (Traditional) - US Keyboard

Handwriting recognition:

Drawing Pad

Speech:

OK

Cancel

- Albanian
- Azeri Cyrillic
- Azeri Latin
- Belarusian
- Belgian (Comma)
- Belgian (Period)
- Belgian French
- Bosnian
- Bulgarian
- Bulgarian (Latin)
- Canadian French
- Canadian French (Legacy)
- Canadian Multilingual Standard
- Chinese (Simplified) - US Keyboard
- Chinese (Traditional) - Alphanumeric
- Chinese (Traditional) - Array
- Chinese (Traditional) - Big5 Code
- Chinese (Traditional) - ChangJie
- Chinese (Traditional) - DaYi
- Chinese (Traditional) - IQChinese Run
- Chinese (Traditional) - New ChangJie
- Chinese (Traditional) - New Phonetic
- Chinese (Traditional) - Phonetic
- Chinese (Traditional) - Quick
- Chinese (Traditional) - Unicode
- Chinese (Traditional) - US Keyboard
- Croatian
- Czech
- Czech (QWERTY)
- Czech Programmers
- Chinese (Traditional) - US Keyboard

EN English (United States) ?

start



Date, Time, Language...

中文輸入法 - Micros...

12:54 AM

